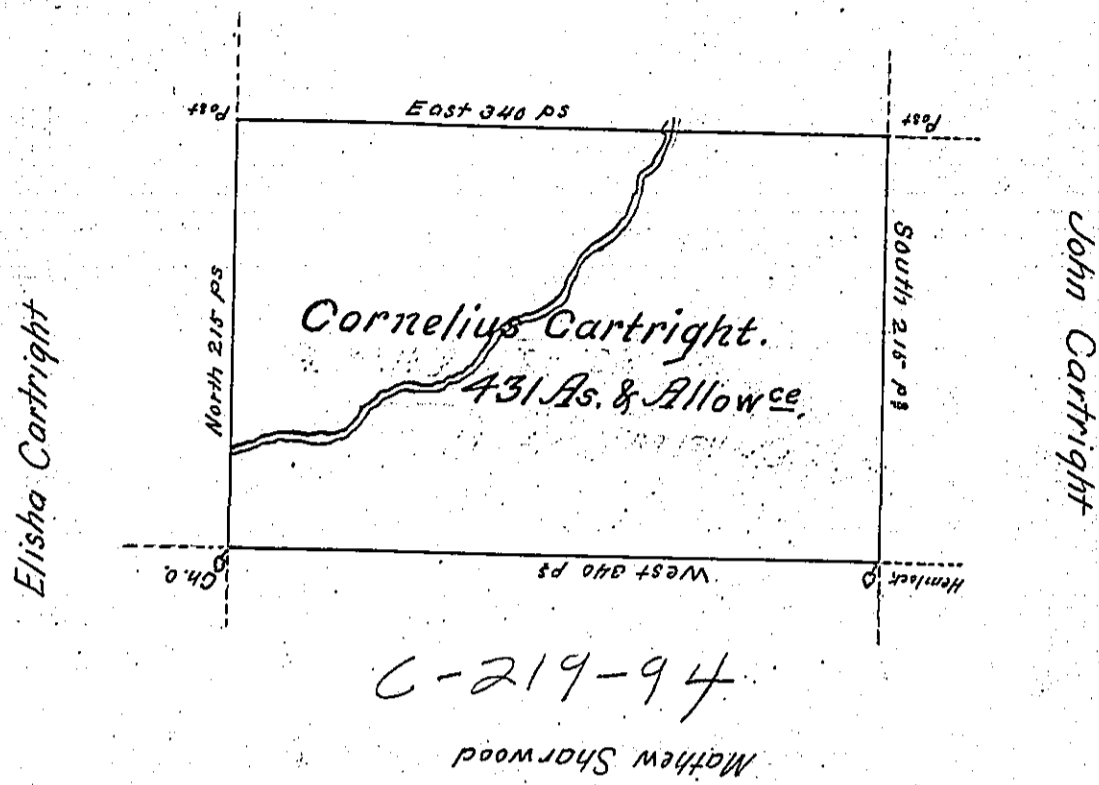


Daniel Devenport



A Draught of a Tract of land situate on the West of Burney's Creek in the County of Luzerne. Containing Four hundred & thirty one Acres & Allow. ^{ce} of six p. Ct for road. Surveyed July 30th 1793 on a Warrant to Cornel^s Cartright (obli.) dated the 13. August 1792. Taken from the field Notes of Joseph J. Wallis then Deputy Surveyor.

To Danl. Brodhead Esqr.
Surveyor General

Henry Donnel D.S.
Certified this 8th Feby 1802.
Tho. Samborn D.S.

IN TESTIMONY that the above is a copy of the original remaining on file in the Department of Internal Affairs of Pennsylvania, made conformably to an Act of Assembly approved the 16th day of February, 1833, I have hereunto set my Hand and caused the Seal of said Department to be affixed at Harrisburg, this seventeenth day of March 1904.

Lance P. Brown
Secretary of Internal Affairs.